

ISCNY Newsletter

April 2020

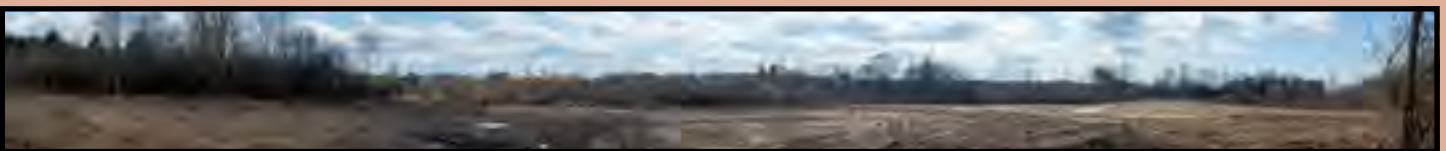
Photo Edition

4-24-2020

Work Continues

Work resumes, but at a slower pace. J. K. Tobin has one worker and that worker is working on what looks like the infiltration basin. It is designed to manage storm water runoff, prevent flooding and soil erosion.

The photo at the bottom shows cleared land at the site of the Islamic Community Center at the end of the long driveway as seen facing East Seneca Turnpike.

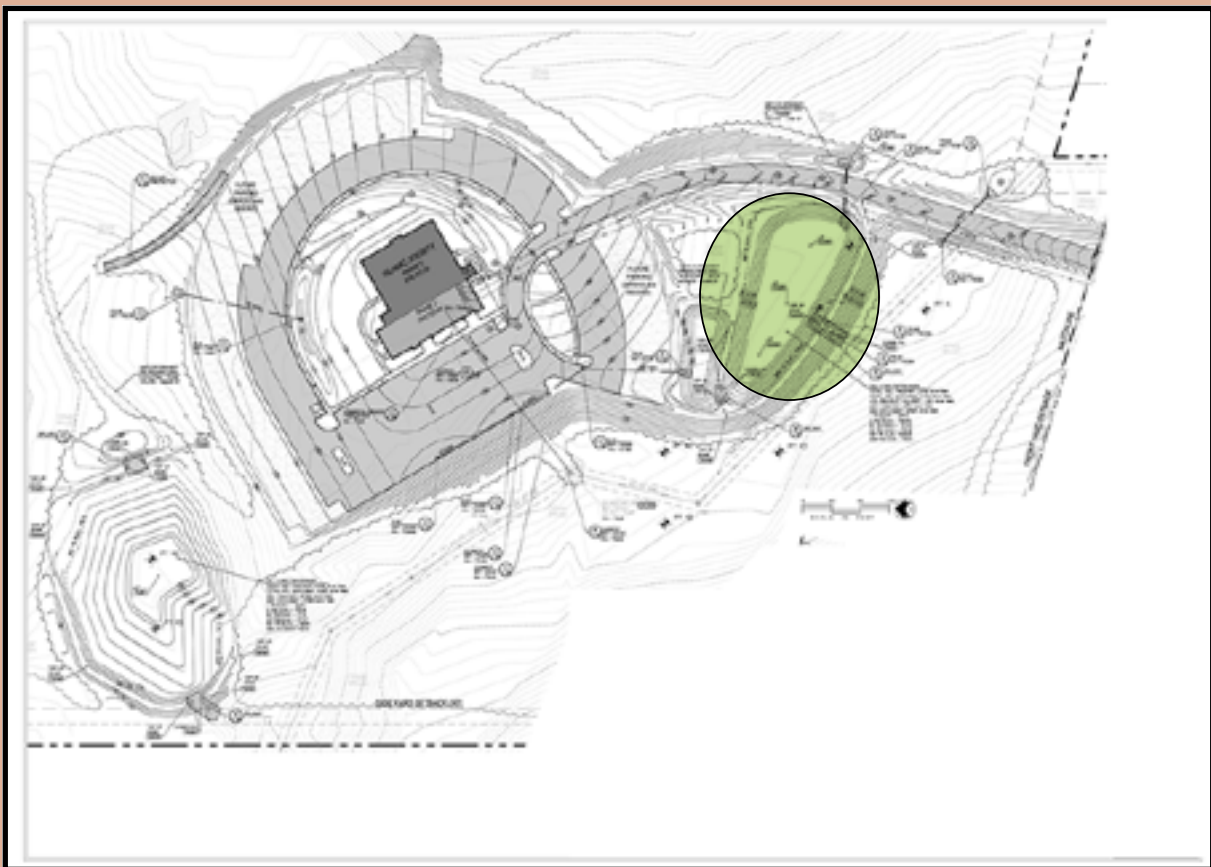


The ISCNY logo at the bottom of the page will take you to the ISCNY web page where you can make a secure donation.





The area highlighted in green approximates the current work area. The land is cleared where the drawing shows the Islamic Community Center and driveway all the way to East Seneca Turnpike. It won't be long before the water and electric is worked on.



We will do our best to keep you updated weekly with the progress of the Islamic Community Center